



EXCAVATOR MANUAL -AND- UNIVERSAL MARKING STANDARDS

UPDATED MAY 2023



TABLE OF CONTENTS

Preface 3

Material type abbreviations/
Definitions 4

What is an excavation? 5

Utility emergency repairs/
Excavator training 6

Preparing to contact OHIO811 before you dig
Why OHIO811? 7

The process of safe digging 8

OHIO811 Locate Work Order 9

What happens when I call OHIO811? 10

So I’ve contacted OHIO811, now what do I do? 11

I see the marks...
Now I can DIG WITH CARE 12

Trenchless Technologies 14

What to do if a damage occurs 15

Recommended good practices 16

A list of “do’s” during excavation 18

A list of “don’ts” during excavation 19

(Continued Next Page)



TABLE OF CONTENTS *(Continued)*

Universal Marking Standards	20-39
White lining	21
Excessive marks/ Markers appropriate for area	22
Identification abbreviations/ Cables	23
Pipelines	24
Facilities marked according to record	25
Conduit/Duct bank	26
Termination points/ Change in direction	28
Offset marks	29
Back tied/Looped service/ Facilities greater than 36 inches	30
Valve pits/manholes/vaults/ Facilities under bodies of water/ Correcting marking errors	31
Work area descriptions	32
For additional information on locating practices	39
THINGS TO REMEMBER	40



PREFACE

This booklet provides basic information on safe excavation practices in Ohio. It is intended as an **educational** resource only. Please be advised of the following:

- ☀ This booklet is not a legal reference. You should consult legal counsel for advice on interpreting the law.
- ☀ It does not contain the complete text of the Ohio Revised Code (ORC) 153.64, 3781.25-3781.32 and 4913. Also, it does not contain reference to OSHA Standard 29 CFR 1926.651. Visit **www.OHIO811.org** for the full-text of these laws.

Failure to comply with the enforceable provisions of Ohio's damage prevention laws could result in fines or penalties, even if a damage has not occurred.

For more information, or to register a complaint go to www.puco.ohio.gov or call (800) 686-7826, Option 4.

- ☀ The information in this booklet is subject to change without notice.

Throughout this manual, look for this symbol:



Please pay special attention to these tips to help in the process of a safe excavation.



OHIO811 does not locate or mark underground facilities. Locating and marking facilities is the responsibility of the utility owner/operators.

There may be other company practices or policies for you to follow, so you should also check with your supervisor.



MATERIAL TYPE ABBREVIATIONS

AC	Asbestos Cement	PI	Plastic Line Inserted into Steel
BRK	Brick Sewer	PL	Plastic
CI	Cast Iron	PVC	Polyvinyl Chloride
CPR	Copper	RCP	Reinforced Concrete Pipe
C/ST	Coated Steel	SCC	Steel Cylinder Concrete
DI	Ductile Iron	STL	Steel
FG	Fiberglass	TR	Transite
FO	Fiber Optic	VCP	Vitrified Clay Pipe
FM	Forced Main		
GI	Green Infrastructure		

Visit **www.OHIO811.org/markings**
to view the material type abbreviations list.

DEFINITIONS

Conduit – A single enclosure containing one or more facilities.

Duct bank – A structure containing two or more conduits.

Owner – Any person or entity who owns the means to convey services or materials.

Operator – Any person who furnishes or transports materials or services by means of a utility line.

Pipelines – Underground utility lines used for the transportation of hazardous liquid, steam, water, sewer, storm, and gaseous materials.



WHAT IS AN EXCAVATION?

ORC 3781.25(I) | “Excavation means the use of hand tools, powered equipment, or explosives to move earth, rock, or other materials in order to penetrate or bore or drill into the earth, or to demolish any structure whether or not it is intended that the demolition will disturb the earth...”

Excavations include, but are not limited to:

- ☼ Demolition of buildings or other structures, even if you do not expect to disturb the earth during demolition.
- ☼ Coal mining and reclamation operations regulated under Chapter 1513 of the Revised Code and rules adopted under it.
- ☼ Government work in excess of 12 inches deep.
- ☼ Farming activity, such as tilling to a depth of more than 12 inches and installation of drain tiles.

Other types of excavation include, but are not limited to:

- | | |
|-------------------------|--------------------------------------|
| ☼ Grading | ☼ Ditching |
| ☼ Digging | ☼ Drilling |
| ☼ Dredging | ☼ Tunneling |
| ☼ Auguring | ☼ Potholing |
| ☼ Scraping | ☼ Tree stump removal |
| ☼ Wrecking | ☼ Razing |
| ☼ Blasting | ☼ Cable or pipe plowing or driving |
| ☼ Setting poles/pipes | ☼ Driving survey pins |
| ☼ Installing sign poles | ☼ Boring holes for percolation tests |
| ☼ Trenching | |



UTILITY EMERGENCY REPAIRS

An emergency situation is a sudden or unexpected occurrence involving a clear and imminent danger, demanding immediate action to prevent or mitigate loss of, or damage to life; health; property or essential public services.

ORC 3781.28(F)(1) | *“...In the case of a utility that is making an emergency repair to its own underground utility system or a governmental entity making an underground emergency repair to traffic control devices, as defined in section 4511.01 of the Revised Code, used on any street or highway under the entity’s jurisdiction, the utility or governmental entity shall notify a protection service and each limited basis participant of the excavation site. This notice need not occur before commencing excavation...”*



Only actual emergencies should be designated as such when a dig notification is provided to OHIO811. An example of an emergency is a broken water main.

EXCAVATOR TRAINING

All excavators utilizing a protection service are required to obtain training in the protection of underground utility facilities. An excavator shall be deemed to have obtained that training if the excavator is a member of a protection service or a statewide association representing excavators and the service or association provides that training. An excavator also may obtain the training from such a service or association without becoming a member.



PREPARING TO CONTACT OHIO811 BEFORE YOU DIG

It all begins with planning your work. A careful review of your plans and your work area prior to the actual excavation can help save you and your company from unexpected downtime, loss of revenue and injury.

A safe excavation can be achieved by following the suggestions and processes outlined in this manual.

Follow these four steps to safe digging:

- 1.** Contact OHIO811 before you dig
- 2.** Wait the required time for marking
- 3.** Respect the marks
- 4.** Dig with care

WHY OHIO811?

ORC 3781.25(A) | OHIO811 is a private, not-for-profit, statewide organization established by law and is the communications link between the excavator and the utility owner/operators.

OHIO811 DOES NOT MARK LINES.

The OHIO811 mission is to prevent damage to member facilities and promote public safety by providing an efficient and effective communication and education process.



THE PROCESS OF SAFE DIGGING

The first step to a safe excavation begins during the planning stages. By planning your work, understanding your work area, and deciding when you plan to start your excavation project you are on your way to digging safely.

Plan before you contact OHIO811:

- ☀ Assess your route or excavation site
- ☀ Gather all your information needed to complete the Locate Work Order Form
- ☀ If required, premark the approximate location in white paint, flags or both (See page 20 ORC 3781.29(f)(1-4))

Now the person digging can contact



ORC 3781.28(A) | “...at least forty-eight hours, but not more than ten working days before commencing excavation, the excavator shall notify a protection service of the location of the excavation site and the date on which the excavation is planned to commence...”



Click, Call or Tap the App

- ☀ Visit www.OHIO811.org to enter your excavation notice through Remote Ticket Entry (RTE) known as idig and edig.
- ☀ Call 800-362-2764 or 811
- ☀ The OHIO811 app is available on the App Store and Google Play for your mobile devices.



OHIO811 LOCATE WORK ORDER

CONTACT PHONE NUMBER

CALLER'S NAME

COMPANY NAME

FAX NUMBER

E-MAIL

COUNTY

CITY/TOWNSHIP

ADDRESS/LOCATION OF WORK

EXTENT OF WORK: FRONT/SIDES/REAR

FARTHEST DISTANCE/DIRECTION BACK OFF ROAD

LOT#

SUBDIVISION

BUILDER NAME

CROSS/BETWEEN STREETS

DISTANCE AND DIRECTION FROM CROSS STREET

DATE OF EXCAVATION

START TIME OF EXCAVATION

TYPE OF WORK

WORKING FOR COMPANY

WORK DONE BY COMPANY

MEANS OF EXCAVATION

BLASTING

PRE MARKINGS

MEET

RR RIGHT OF WAY

HIGHWAY

MILE MARKER AT/FROM

COMMENTS

OHIO811 TICKET NUMBER



WHAT HAPPENS WHEN I CALL OHIO811?

When you call OHIO811 you will be asked questions regarding your project. You will need to have the OHIO811 Locate Work Order information. See the previous page for a list of the information that will be requested.

After you have given the appropriate information to the Customer Service Representative (CSR), this is what happens:

- ☀ The CSR will read all information back to you.
- ☀ You must verify its accuracy.
- ☀ You will be given a list of member utility owners that OHIO811 will notify.
- ☀ ORC 3781.26(C) | You will be given a reference/ticket number that is proof of your call. Record the number and keep it for the duration of your excavation, or longer, when applicable. This number allows access to positive response. We recommend each excavator check positive response prior to beginning excavation to determine the status of their locate request. To check positive response call 800-445-3894, visit www.OHIO811.org or select Positive Response in the OHIO811 App.



ORC 3781.271 | “Beginning July 1, 2013, each protection service shall reasonably modify its one-call notification system so as to permit the reasonable identification of the location of a proposed excavation site in a manner in which the protection service may then notify any potentially affected limited basis participants. Each member of a protection service, including limited basis participants, shall be responsible for providing current contact information to the protection service.”

A point of caution: not all utilities are members with OHIO811



SO I'VE CONTACTED OHIO811 NOW WHAT DO I DO?

WHEN USING OHIO811 REMOTE TICKET ENTRY:

idig Remote Ticket Entry allows excavators, with training and passwords, to prepare and map their own 48-hour dig notification requests as well as design tickets. For more information and access to idig training, visit www.oups.org/idig

WAIT THE REQUIRED AMOUNT OF TIME:

ORC 3781.28(A) | *"...at least forty-eight hours but not more than ten working days before commencing excavation, the excavator shall notify a protection service of the location of the excavation site and the date on which the excavation is planned to commence..."*

UNDERGROUND FACILITIES WILL BE MARKED BY THE FACILITY OWNERS

ORC 3781.29(A) | Within 48 hours of contacting OHIO811, each utility shall review the status of its facilities within the excavation site, locate and mark its underground utility facilities at the excavation site.

ORC 3781.26(D) | *"Each utility fully participating in a protection service pursuant to this section shall also participate in its affiliated positive response system. Each utility participating in a protection service on a limited basis shall directly communicate to the excavator the presence or absence of any conflict between the existing underground utility facilities and the proposed excavation site."*



The 48-hour notice for utilities to mark excludes Saturdays, Sundays, and Legal Holidays.



I SEE THE MARKS... NOW I CAN DIG WITH CARE

YOU have *planned*, YOU have made the *necessary contacts*,
YOU are now *ready to dig*... **Now what do you do?**

ORC 3781.30 | “Duties of Excavator...

When making excavations using traditional or trenchless technologies, the excavator shall do all of the following:

- (1) | Maintain reasonable clearance between any underground facility and the cutting edge or point of powered equipment;
- (2) | Protect and preserve the markings of tolerance zones of underground utility facilities until those markings are no longer required for proper and safe excavations;
- (3) | When approaching and excavating within the tolerance zone of underground utility facilities with powered equipment, require an individual other than the equipment operator to visually monitor the excavation activity for any indication of the underground utility facility;
- (4) | Conduct the excavation within the tolerance zone of underground utility facilities in a careful, prudent and nondestructive manner, when necessary, in order to prevent damage.
- (5) | Excavate up to the total depth of the excavation to either determine the precise location of underground utility facilities or verify that the total depth of excavation is free of such facilities...”



I SEE THE MARKS...

NOW I CAN DIG WITH CARE

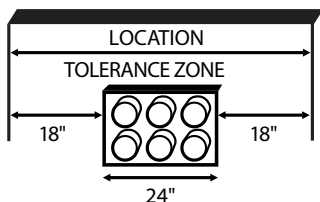
(Continued)

3781.31(B) | “If the markings of underground utility facilities made under section 3781.29 of the Revised Code are destroyed or removed before excavation is completed, the excavator shall notify the utility through the protection service that the markings have been destroyed or removed, and the utility shall remark the facilities in accordance with section 3781.29 of the Revised Code.”

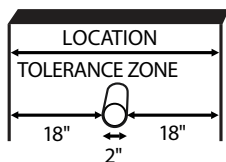
Wait 48 hours for remarks at the excavation site.

Remember:

3781.25 (E) | “Tolerance Zone” means the site of the underground utility facility including the width of the underground utility facility plus eighteen inches on each side of the facility.”



LARGE PIPE OR MULTIPLE CONDUITS



SMALL PIPE OR CABLE(S)

Methods of excavation within this area include, but are not limited to:



Hand digging



Pot holing



Vacuum excavation



TRENCHLESS EXCAVATION



ORC 3781.30 | Trenchless Technologies

When utilizing trenchless excavation methods, the excavator must comply with the following requirements:

- 1) Expose and confirm all underground utility facilities at each crossing point by the proposed excavation in a nondestructive manner to the installation depth of the new facility.
- 2) Expose all parallel underground utility facilities in a nondestructive manner at the beginning and end of each trenchless excavation to the installation depth of the new facility. If the proposed alignment is within the tolerance zone of any parallel underground utility facility, the underground utility facility shall be exposed every one hundred feet.
- 3) Ensure that the final product installation maintains the proper clearances of existing underground utility facilities.

Always refer to HDD Guidelines Book for suggestions when digging within the tolerance zone of underground facilities with this equipment.

Liquid pipeline companies may have additional guidelines for excavating near their facilities.



WHAT TO DO IF A DAMAGE OCCURS

For your safety, you should walk away immediately and take steps to clear the area to protect yourself and your crew. Do not try to repair or stop a leak yourself or use anything that might create a spark, such as a cell phone.

According to the Federal Pipeline Inspection, Protection and Safety Act—a person who engages in demolition, excavation tunneling, or construction, and who causes damage to a pipeline facility that may endanger life or cause serious bodily harm or damage to property—

(A) may not fail to promptly report the damage to the owner or operator of the facility; and

(B) if the damage results in the escape of any flammable, toxic or corrosive gas or liquid, may not fail to promptly report to other appropriate authorities by calling the 911 emergency telephone number.

Also call OHIO811 so that other utility owners in the area may be notified.

ORC 3781.30(7) | “...take reasonable appropriate actions needed to protect persons and property and to minimize safety hazards until those agencies and departments and the utility arrive at the scene...”

ORC 3781.30(6) | “...As soon as any damage is discovered, including gouges, dents, or breaks to coatings, cable sheathes, and cathodic protection anodes or wiring, report the type and location of the damage to the utility and permit the utility a reasonable amount of time to make necessary repairs;”



RECOMMENDED GOOD PRACTICES

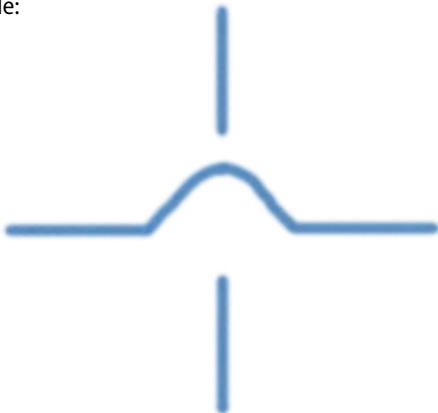
It is recommended that this symbol identify a tie in.

Example:



It is recommended that this symbol identify the intersection of two separate facilities.

Example:



(Continued Next Page)



RECOMMENDED GOOD PRACTICES *(Continued)*

1. Request markings necessary for your work scope. Don't request markings outside of your excavation area.
2. Marking size and frequency should be appropriate for the situation or area. Locate what is necessary for the excavator to perform their job safely.
3. It is recommended that the color pink be substituted for white premarkings when snow is on the ground. Indicate the use of this alternate color on your locate request.
4. Provide detailed information about your premarking on your locate request when possible (i.e., number of premarkings).
5. Use appropriate markers for decorative surfaces (i.e., whiskers, chalk, etc.).
6. An 18-inch tolerance zone should be respected around all above ground infrastructure.
7. Identifying markings such as facility owner, size and type shall not be used as a measuring point when establishing the tolerance zone of a buried utility.



A LIST OF "DO'S" DURING EXCAVATION

- ☀ **Do** check positive response prior to arriving at job site.
- ☀ **Do** keep a reasonable clearance between any underground facility and the cutting edge or point of powered equipment.
- ☀ **Do** protect and preserve the color-coded markings until those markings are no longer needed for proper and safe excavation.
- ☀ **Do** contact OHIO811 for a remark if the markings are destroyed or removed before excavation is complete and allow 48 hours to remark the site.
- ☀ **Do** make sure someone other than the equipment operator, i.e. the spotter, is there to look for any sign of the underground facility.
- ☀ **Do** conduct the excavation near the underground facility carefully. Excavate in a careful and prudent manner; by hand, if necessary; to be able to tell the exact location of the underground facility and to prevent damage.
- ☀ **Do** protect and support exposed facilities during excavation and take care while backfilling to maintain support to prevent damage. Be sure that backfill materials are free of any material that could damage the facility.



Be prepared. Always have an updated list of emergency contact numbers for the excavation area including law enforcement, fire department and utility owners/operators.

Facility markers in the area should display emergency contact information.



A LIST OF "DONT'S" DURING EXCAVATION

- ☀️ **If** an excavation will cover a large area and will progress from one area to the next over a period of time, the excavator shall provide written notice of excavation with projected timelines for segments of the excavation as the excavation progresses in order to coordinate the marking of facility locations with actual excavation schedules.
- ☀️ **Don't** assume that a pipeline or cable runs straight between facility markers.
- ☀️ **Don't** assume the depth of a utility. Never assume that an underground facility is the same depth throughout the entire route of the excavation.
- ☀️ **Don't** excavate within the tolerance zone with any other equipment except what has been recommended in this guide.
- ☀️ **Don't** report emergency locates that are not emergencies.
- ☀️ **Don't** refresh the utility locators marks with your own paint. Contact OHIO811 to request a remark.
- ☀️ **Don't** excavate on someone else's ticket number.
- ☀️ **Don't** assume *all* facility owners have responded to your request. Check positive responses.



Laws and regulations often change. As an excavator it is your responsibility to know the current mandates.



OHIO UNIVERSAL MARKING STANDARDS

APWA COLORS

The American Public Works Association recommended color code shall be used to mark the location of underground facilities, temporary survey markings and site of intended excavation. When utility company representatives mark a location, they use colored flags and/or paint to identify the type of underground service:

ORC 3781.29(C) | “A utility shall mark its underground facilities using the following color codes:...”

RED	Electric Power Lines, Cables, Conduit and Lighting Cables
YELLOW	Gas, Oil, Steam, Petroleum, or Gaseous Materials
ORANGE	Communication, Alarm or Signal Lines, Cables or Conduit
BLUE	Potable Water
PURPLE	Reclaimed Water, Irrigation and Slurry Lines
GREEN	Sewers and Drain Lines
PINK	Temporary Survey Markings
WHITE	Proposed Excavating



WHITE LINING

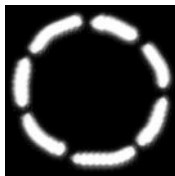
It is necessary to be specific about your area of excavation when contacting the Ohio Utilities Protection Service. The description must meet one of the following criteria:

3781.29(F)(14) | *“An excavator is not required to premark the approximate location of an excavation as provided in division (D) of this section in any of the following situations:*

- (1) The utility can determine the precise location, direction, size, and length of the proposed excavation site by referring to the notification provided by the protection service pursuant to sections 3781.27 and 3781.28 of the Revised Code.*
- (2) The excavator and the affected utility have had an on-site, preconstruction meeting for the purpose of premarking the excavation site.*
- (3) The excavation involves replacing a pole that is within five feet of the location of an existing pole.*
- (4) Premarking by the excavator would clearly interfere with pedestrian or vehicular traffic control.”*

If none of these four requirements are met, excavators are required to premark with white paint in order to show the facility owners/locators the specific area where excavation will take place. This could help to make the locate process more efficient and timely.

For a single point excavation; such as installing poles, pedestals or planting a tree, premark the approximate location of the excavation as shown with dashes.



WHITE LINING (Continued)



For continuous excavation; such as trenching, boring, etc.; mark the center line of excavation with dashes in white paint. Excavation width (in feet) shall be indicated on either side of the center line in legible figures.

White flags or stakes may be used in place of white paint and, in some situations, may be more practical.

EXCESSIVE MARKS

Markers used to identify underground facilities should not be excessive or oversized.

MARKERS APPROPRIATE FOR AREA

Underground facilities shall be marked using paint, flags, whiskers, chalk or other media as appropriate or a combination to identify the facility(s). Marks shall be placed at the beginning and end of the locate and at a minimum interval of two feet but not more than twenty-five feet throughout the locate as needed to clearly identify the route of the underground utility.

It is recommended that when flags are used at the excavation site by the facility owner/locator, the facility owner/operator's name is on the flag as well as a contact name and phone number. This contact will be able to assist the excavator if additional information is needed about the location of underground facilities.



IDENTIFICATION ABBREVIATIONS

When marks are placed at the excavation site, the owner/operator of a utility line shall be indicated by a letter or letters utilizing the APWA color code. These letters shall be legible and placed at the beginning and end of the locate and at intervals throughout the locate as needed to clearly identify the owner/operator. This may also be achieved by the use of flags that indicate the owner/operator of the facility.

4" STL CG

Visit **www.OHIO811.org/markings**
to view the facility owner identification codes list.

CABLES

Underground utility lines of the same type in the same trench owned by the same company shall be marked individually.

- A. If a single underground facility is present, it shall be marked by placing a single mark over the approximate center of the facility. It is recommended that this mark be a minimum of 1" wide and 12" in length.

OE OE

CABLES (Continued)

B. If multiple underground facilities are present, they shall be marked by placing a single mark over the approximate center of each underground facility. It is recommended that this mark be a minimum of 1" wide and 12" in length.



Marks shall be placed at the beginning and the end of the locate and at a minimum interval of two feet but not more than fifty feet (50') throughout the locate as needed to clearly identify the route of the underground utility.

PIPELINES

A. Pipelines two inches and smaller (nominal size): The physical location of a pipeline shall be represented by a single mark.



B. Pipelines larger than two inches (nominal size): The physical location of a pipeline shall be represented by a single mark. The nominal size shall be noted.



(Continued Next Page)



PIPELINES *(Continued)*

For all pipelines:

1. The owner/operator shall be identified. Flags, as well as paint, shall be deemed acceptable as identifying the owner/operator.
2. When known, the material type of the pipeline shall be indicated using the "material type" abbreviation index.
3. When the facility is installed in casing the facility shall be marked as follows: "diameter and material type/casing diameter and material type". If the casing size or material is unknown it shall be indicated by "UNKN" and, the excavator, designer or engineer should contact the facility owner. All parties involved shall work jointly to establish accurate information.

4" STL CG/12"DI 4" STL CG/UNKN

4. Marks shall be placed at the beginning and the end of the locate and at a minimum interval of two feet but not more than twenty-five feet (25') or anytime the facility changes direction, (maximum interval length does not apply to design tickets) throughout the locate as needed to clearly identify the owner/operator, pipeline location, material, and width.
5. All numbers identifying width shall be in inches.

FACILITIES MARKED ACCORDING TO RECORD

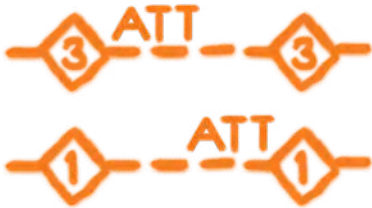
Facilities not marked via electronic equipment should be indicated in this manner, in appropriate facility color code.



CONDUIT / DUCT BANK

The term “conduit” shall be used for a single enclosure containing one or more facilities; the term “duct bank” shall be used for a structure containing two or more conduits.

- A.** For banks constructed with conduits sized 2-inches or less, the following information will be provided:
1. A single mark is used.
 2. A diamond is placed within the mark.
 3. The number of small-diameter conduits shall be indicated within the diamond symbol.



- B.** For duct banks containing conduits larger than 2-inches, the following information will be provided:
1. The duct bank boundary (the “width”) is identified with marks after locating the outermost conduits within the bank.
 2. The number of conduits shall be placed within the diamond. This diamond shall be placed within the duct bank boundary marks.



(Continued Next Page)



CONDUIT / DUCT BANK (Continued)

In situations where multiple conduits, which are owned and/or operated by different companies are placed together in a bundle fashion, a conduit structure or duct bank marking symbol shall be used by the first operator marking the facility. Other operators owning facilities within the bundle shall verify the marks and add their owner/operator letter designation.



C. For all conduits and duct banks:

1. The owner(s)/operator(s) shall be indicated using the facility owner identification code.
2. Marks shall be placed at the beginning and the end of the locate and at a minimum interval of two feet but not more than twenty-five feet (25') or anytime the facility changes direction, (maximum interval length does not apply to design tickets) throughout the locate as needed to clearly identify the owner/operator, the conduit/duct bank location, and the number of conduits. If known, indicate number of conduits in a duct bank.

TERMINATION POINTS

Termination points, stub outs and dead ends shall be marked as shown. Marking could also be accompanied by adding the letters "TP".



CHANGE IN DIRECTION

When deviations in the direction of a facility are known to exist, the deviations shall be marked in a manner which clearly identifies the route of the facility.



OFFSET MARKS

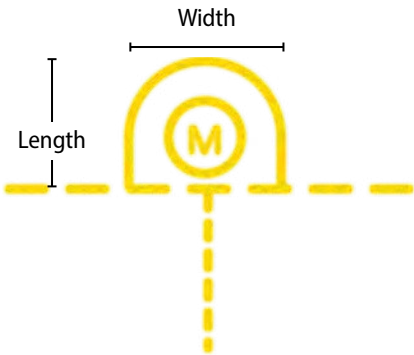
In areas prone to the frequent destruction of marks, offset marks may be used in conjunction with the marks placed at the actual location of a facility. They are intended to be used as a supplemental means of marking.

1. A line is placed in conjunction with an arrow and a measurement (stated in feet), which specifies the distance from the reference line to the actual location of the facility.
2. The arrow indicates the direction from the reference line to the actual location of the facility.
3. The arrow shall be oriented at 90 degrees to the reference line.
4. The distance to the actual location of the facility, from the reference line, shall be placed on one side of the arrow.
5. The locator shall provide all of the necessary information which adequately identifies the specific facility in accordance with the marking standards. This information shall be placed on the side of the arrow not utilized for the distance information.



BACK TIED/LOOPE

When known by records or documentation, the symbol shall be a ½ circle equaling 36 inches in width and 36 inches in length unless greater amount is identified.



FACILITIES GREATER THAN 36 INCHES

For facilities greater than 36 inches in diameter, a rectangle with lines extending from each end that represent the direction of the facility shall be drawn using the appropriate APWA color. Facility owner information and, when known, the size and type of the facility shall be placed inside the rectangle.



VALVE PITS/MANHOLES/VAULTS

When known, the perimeter of valve boxes, manholes, and other surface indicators shall be marked using the appropriate APWA color code. The structure should be named as such (vault, pit, manhole, etc.) along with the structure owner's indicator. If the structure size is unknown it shall be indicated as "UNKN". If the size of the structure is not indicated, the excavator, designer, or engineer should contact the facility owner. All parties shall work jointly to establish accurate information.



FACILITIES UNDER BODIES OF WATER

Identifying Facilities Located Under Bodies of Commercially Navigable Waterways...

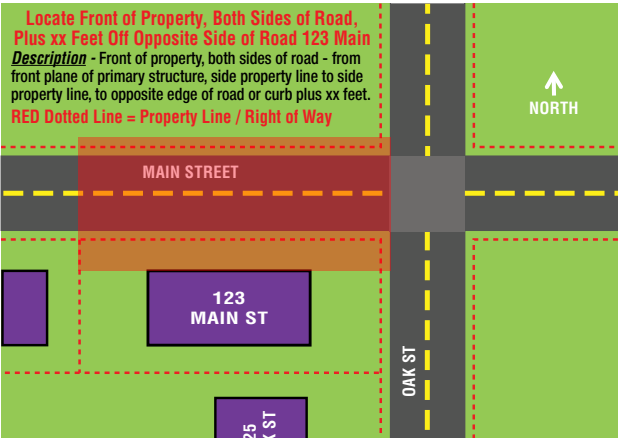
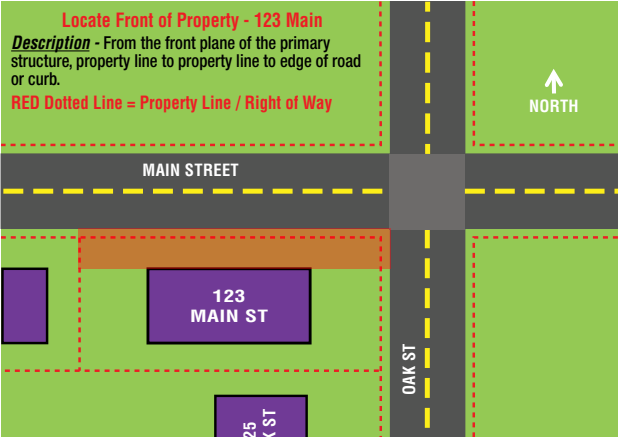
It is recommended that facility owners/operators shall comply with applicable state and federal standards.

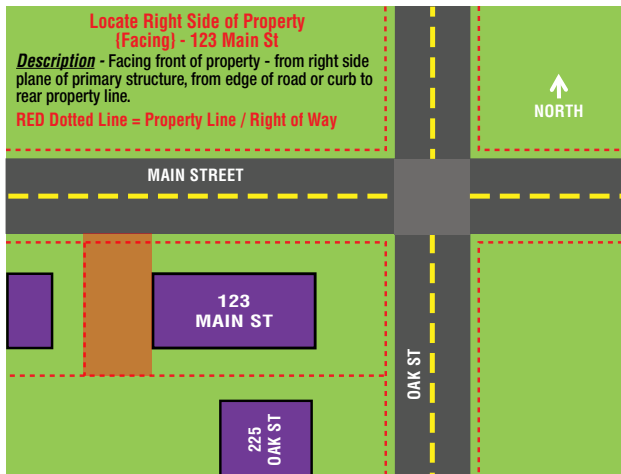
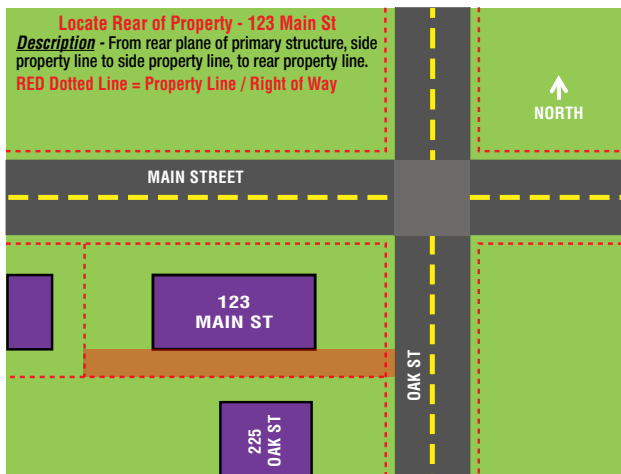
CORRECTING MARKING ERRORS

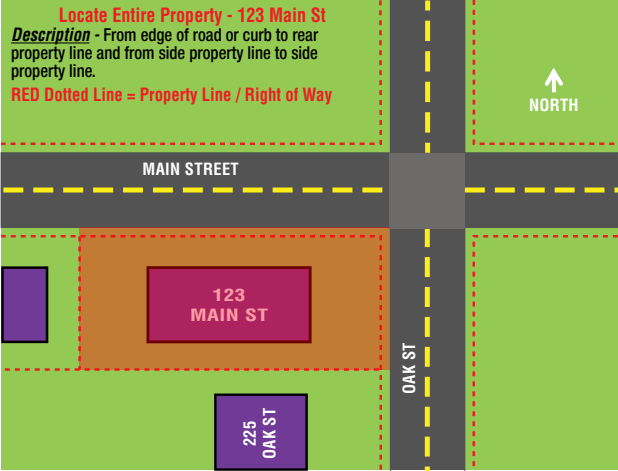
Marking errors shall be corrected by the locator/operator and communicated to the excavator as soon as possible after the discovery of such errors. Black paint shall be used to remove, cover up or cancel erroneous markings. In the event of damage, marking errors shall be preserved until such marks are documented.



WORK AREA DESCRIPTIONS



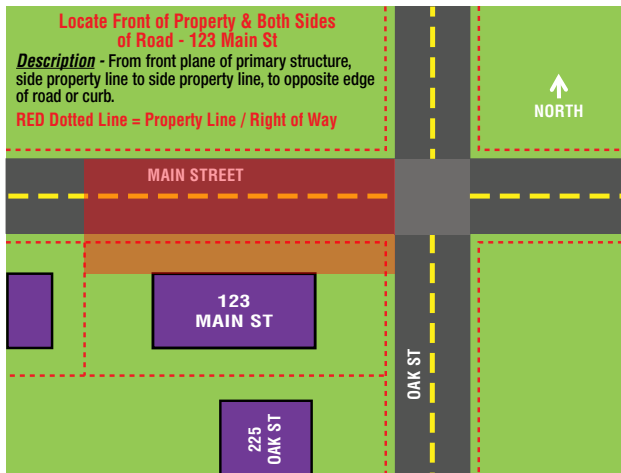




**Locate Front of Property & Both Sides
of Road - 123 Main St**

Description - From front plane of primary structure,
side property line to side property line, to opposite edge
of road or curb.

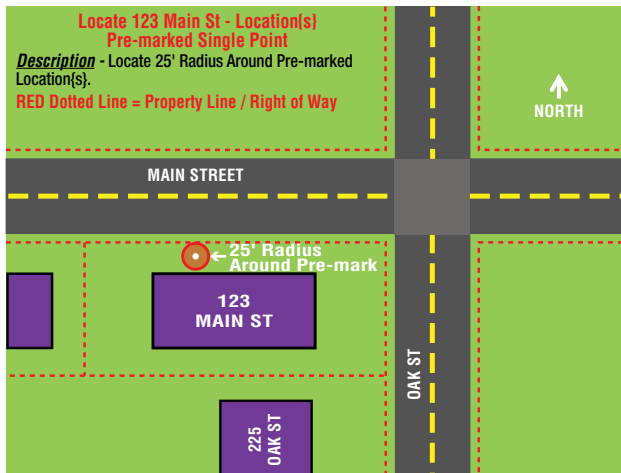
RED Dotted Line = Property Line / Right of Way

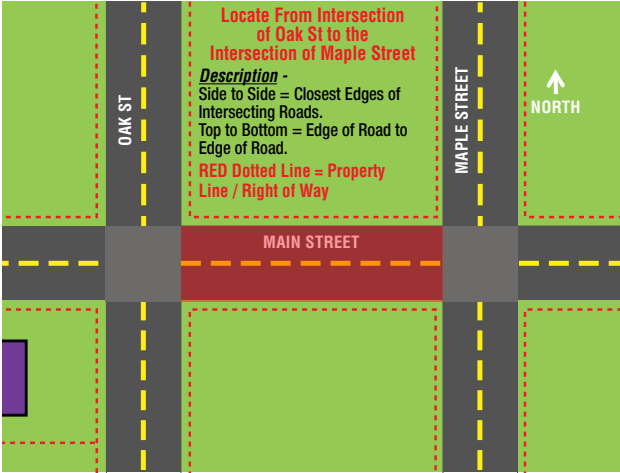


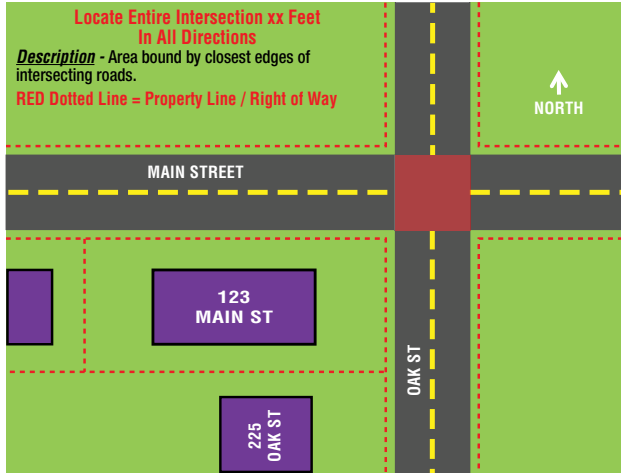
**Locate 123 Main St - Location(s)
Pre-marked Single Point**

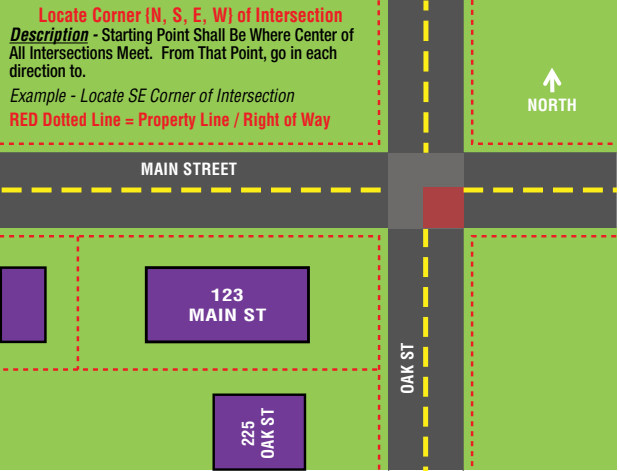
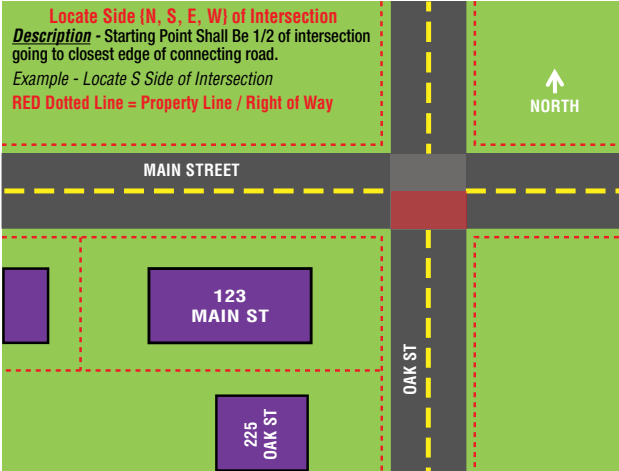
Description - Locate 25' Radius Around Pre-marked
Location(s).

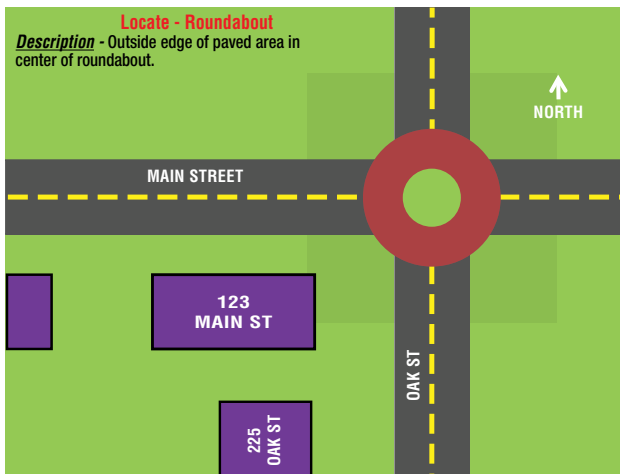
RED Dotted Line = Property Line / Right of Way











FOR ADDITIONAL INFORMATION ON LOCATING PRACTICES...

This manual outlines the recommended facility marking standards for Ohio. For additional information on locating practices, including the use of facility records, locator training recommendations and safety guidelines; refer to Common Ground Alliance Best Practices at **www.commongroundalliance.com**.



8-1-1 or 1-800-362-2764 www.OHIO811.org

THINGS TO REMEMBER

Anyone who intends to dig in Ohio
can contact OHIO811 24 hours a day,
7 days a week, 365 days a year.



1-800-362-2764

www.OHIO811.org

12467 Mahoning Avenue
North Jackson, Ohio 44451

REVISED MAY 2023



Color Codes For Locating Utility Lines

RED Electric Power Lines, Cables, Conduit and Lighting Cables

YELLOW Gas, Oil, Steam, Petroleum, or Gaseous Materials

ORANGE Communication, Alarm or Signal Lines, Cables or Conduit

BLUE Potable Water

PURPLE Reclaimed Water, Irrigation and Slurry Lines

GREEN Sewers and Drain Lines

PINK Temporary Survey Markings

WHITE Proposed Excavating

***Tolerance Zone:** Width of Underground Facility Plus 18" on Each Side.*



SCAN TO VIEW THE
2023 EXCAVATOR
MANUAL IN ENGLISH



ECHE UN VISTAZO
AL MANUAL DEL
EXCAVADOR 2023
EN ESPAÑOL

8-1-1 or 1-800-362-2764
www.OHIO811.org